

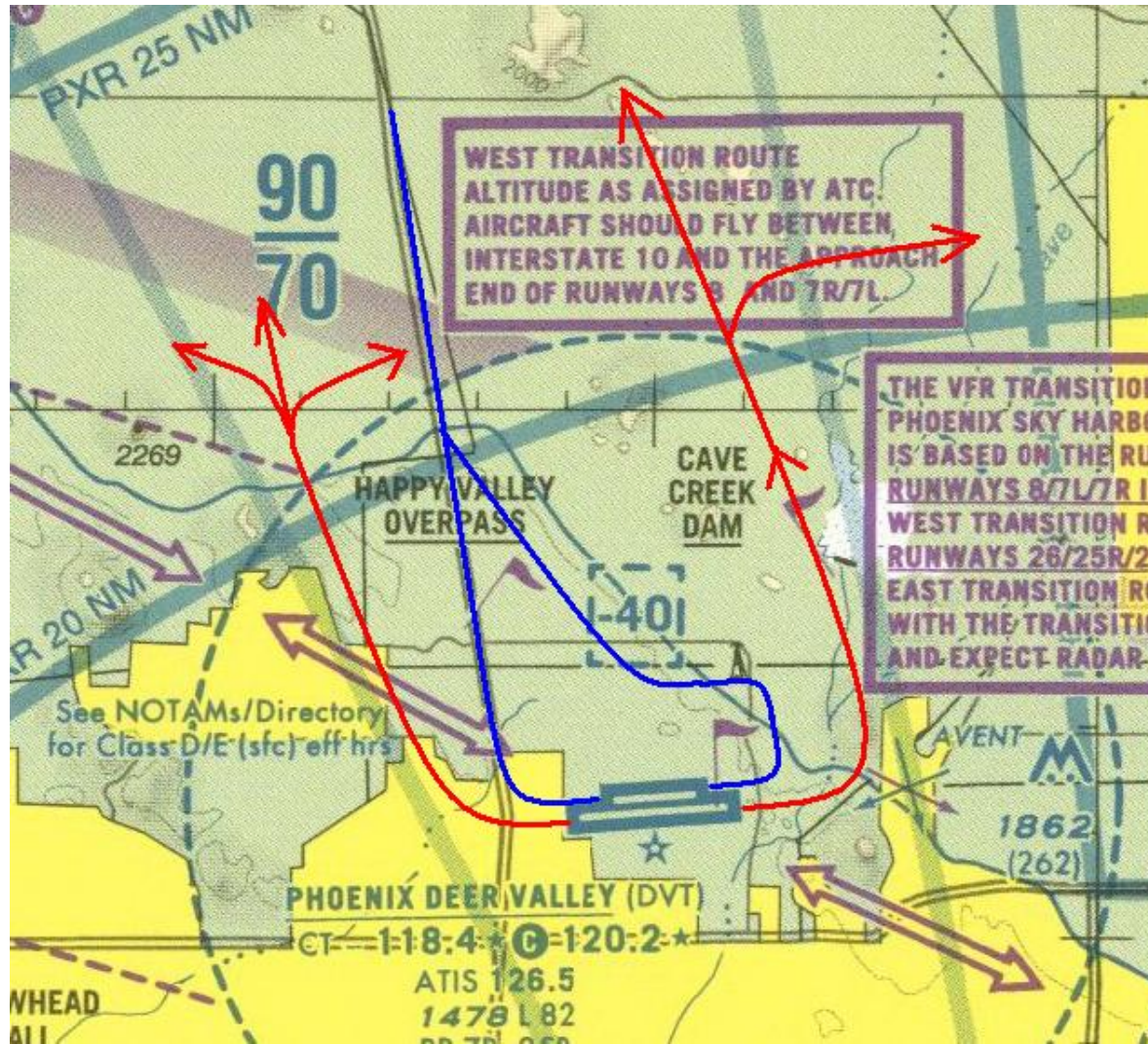
North Departure - Arrival

Dep- Rwy 7 Left turn Hdg 330

Dep- Rwy 25 West of I-17 Right turn Hdg 330

Outside of KDVT Airspace (4000' or 4.5NM) on-course

Arrival- Shooting range – Canal/I-17 Then as assigned by ATC



East Departure – Arrival

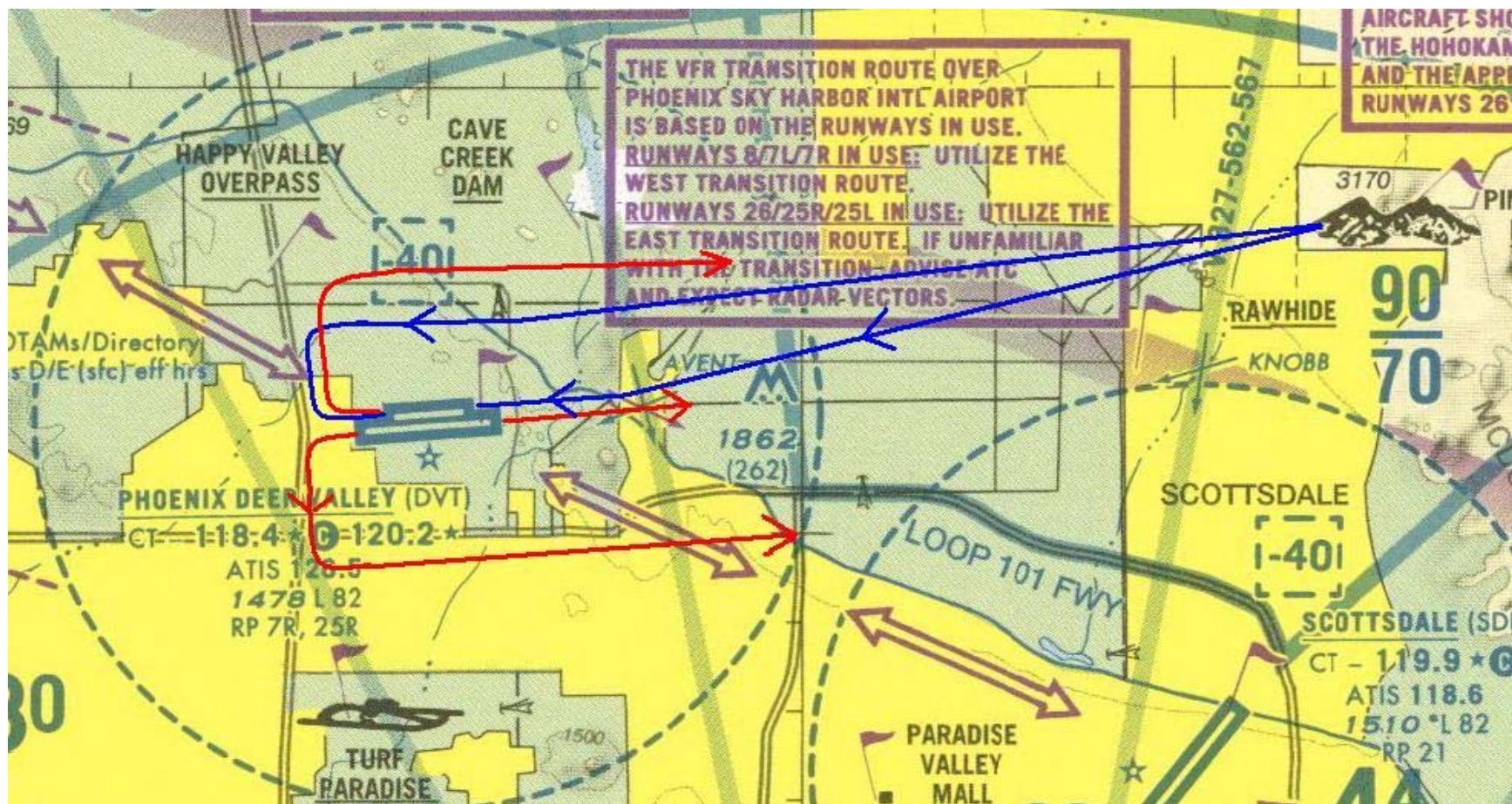
Dep- Rwy 7 Straight out until East of Cave Creek Rd

Dep- Rwy 25L Left Downwind South of Loop 101 Until East of Cave Creek Rd

Dep- Rwy 25R Right Downwind North of Happy Valley Rd Until East of Cave Creek Rd

-After Cave Creek Rd on-course

Arrival – Pinnacle Peak then as assigned by ATC



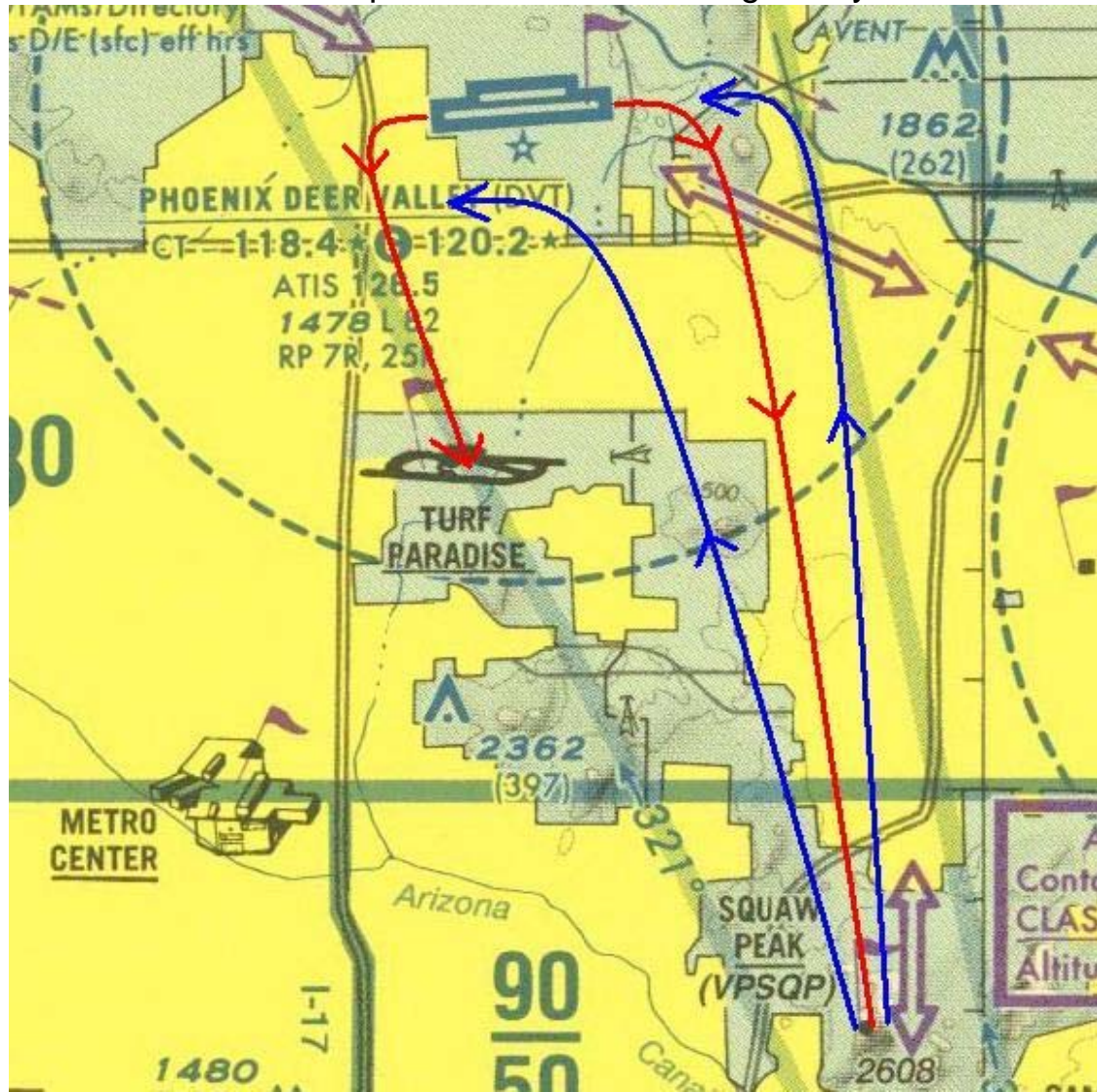
South Departure – Arrival

Dep – Rwy 7 Right turn Hdg 150

Dep – Rwy 25 Left turn Hdg 150

Then South of Bell Rd on-course

Arrival – Squaw Peak then as assigned by ATC



West Departure – Arrival

- Dep- Rwy 7R Right Downwind South of Loop 101
- Dep- Rwy 7L Left Downwind North of Happy Valley Rd
- Dep- Rwy 25 Straight out until clear of KDVT airspace
- Arrival – 10nm West then as assigned by ATC

